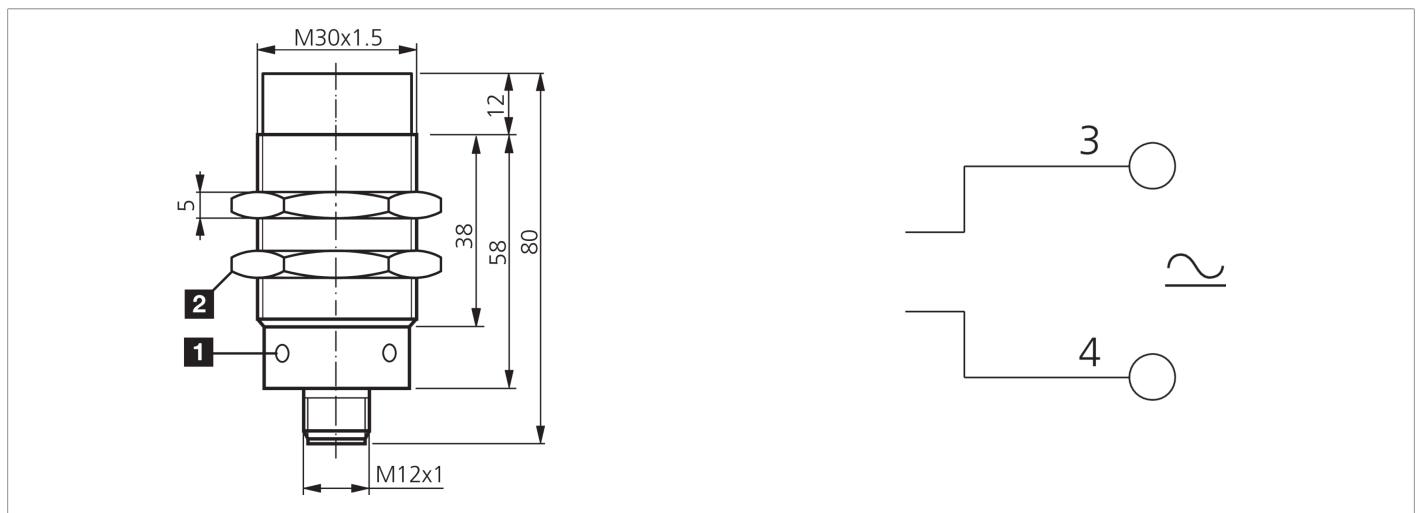
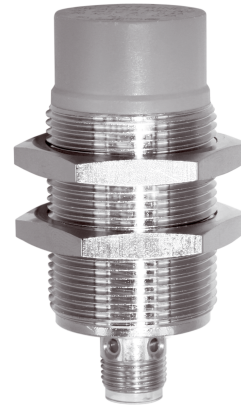





**202525**  
**UCC 30 M 15 S-IBSL**  
**Inductive proximity sensor**

- Service voltage 20 ... 250 V AC, 10 ... 250 V DC
- Protection class IP 67
- Metal connector
- Integrated amplifier
- Short-circuit protection
- LED/ring-LED



Function												
											CE	

Technical data (typ.)	+20°C, 24 V DC
Service voltage	20 ... 250 V AC / 10 ... 250 V DC
Internal power consumption	1 mA
Insulation voltage endurance	500 V
Installation type	non-flush
Thread	M30 x 1.5
Housing length	80 mm
Housing material	Brass (CuZn, nickel-plated)
Tightening torque	40 Nm
Operating principle	inductive
Evaluation	digital
Design	Thread
Product series	INU Universal voltage
Switching output	200 mA (Closer), AC/DC
Voltage drop (max.)	6 V
Switching distance (SN)	15 mm
Standardized measuring plate	45 x 45 x 1 mm
Switching hysteresis (max.)	10 %
Switching frequency	25 Hz AC / 500 Hz DC
Ambient temperature during operation	-25 ... +70 °C
Protection type	IP 67
Connection	Connector, M12, 4-pin, A-coded



**202525**  
**UCC 30 M 15 S-IBSL**  
**Inductive proximity sensor**

**Technical data (typ.)**

**+20°C, 24 V DC**

Connection cable

VK ...

**More information / accessories**

<https://www.di-soric.com/202525>