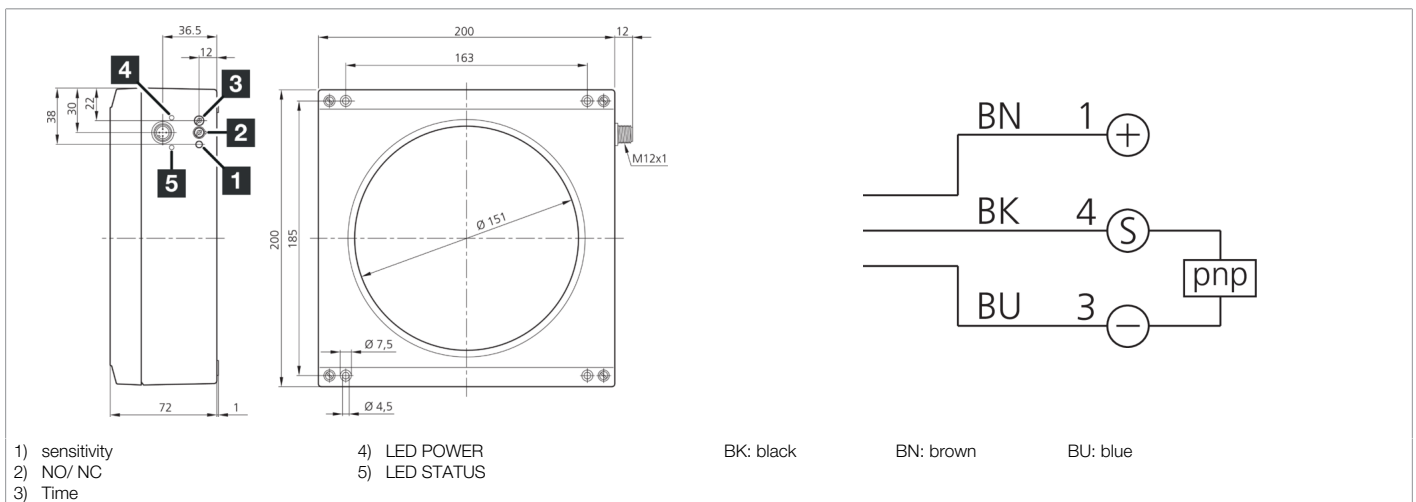
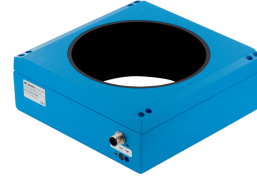




204351
IRD 150 PSOK-IBS
Inductive ring sensor

- High resolution
- Short response time
- Sensitivity and pulse stretching adjustable
- Resistant to dirt
- Dynamic operating principle
- Metal connector
- High protection type



| Function | | | | | | | | | | | | | |
|----------|--|--|--|--|--|--|--|--|--|--|--|--|--|
| | | | | | | | | | | | | | |

| Technical data (typ.) | +20°C, 24 V DC |
|--------------------------------------|--|
| Service voltage | 10 ... 35 V DC (Supply Class 2) |
| No-load current (max.) | 20 mA |
| Insulation voltage endurance | 1000 V |
| Internal diameter | 151 mm |
| Assembly distance to metal (min.) | 80 mm |
| Housing material | Die-cast aluminum |
| Material | POM (Ring) |
| Protection class | III, operation on protective low voltage |
| Approvals | UL |
| Operating principle | inductive |
| Evaluation | Dynamic |
| Switching output | pnp, 200 mA, NO/NC, switchable |
| Voltage drop (max.) | 2 V |
| Pulse stretching | 0.1 ... 150 ms adjustable |
| Resolution | Ø 10.0 mm |
| Sensitivity adjustment | Potentiometer |
| Speed of parts (max.) | 25 m/s |
| Speed of parts (min.) | 0.1 m/s |
| Response time | 0.20 ms |
| Release time | 0.20 ms |
| Ambient temperature during operation | 0 ... +50 °C |



204351

IRD 150 PSOK-IBS

Inductive ring sensor

Technical data (typ.)

+20°C, 24 V DC

Protection type

IP 67

Connection

Connector, M12, 4-pin, A-coded

Connection cable

VK ...

More information / accessories

<https://www.di-soric.com/204351>