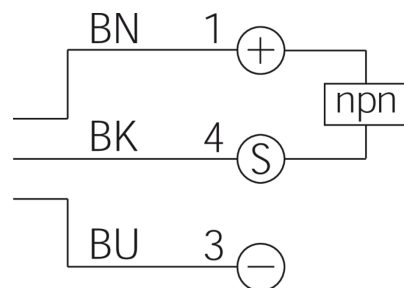
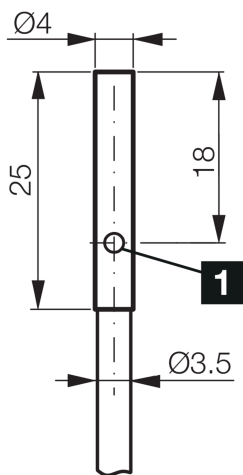
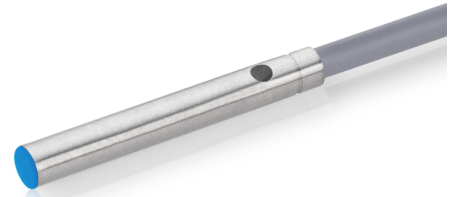




**205105**  
**DCC 4.0 V 2.5 NOLK**  
**Inductive proximity sensor**

- Highly flexible cable
- Integrated amplifier
- Short-circuit protection
- Starting pulse suppression
- LED



1) LED

BK: black

BN: brown

BU: blue

**Function**



**Technical data (typ.)**

**+20°C, 24 V DC**

Service voltage	10 ... 30 V DC
Internal power consumption	< 10 mA
Insulation voltage endurance	According to IEC 60947-5-2 (7.2.3.1)
Installation type	Flush
Diameter	Ø 4.0 mm (Diameter)
Housing length	25 mm
Housing material	Nickel-silver
Material of cable	PVC
Protection class	III, operation on protective low voltage
Operating principle	inductive
Evaluation	digital
Design	Cylinder
Characteristics	extremely high operating distance
Product series	INM-300 Miniature Extended
Switching output	npn, 200 mA, NC
Voltage drop (max.)	2 V (200 mA)
Switching distance (SN)	2.5 mm
Standardized measuring plate	7.5 x 7.5 x 1 mm
Switching hysteresis (max.)	< 3 ... 15 %
Switching frequency	800 Hz



**205105**  
**DCC 4.0 V 2.5 NOLK**  
**Inductive proximity sensor**

**Technical data (typ.)**

**+20°C, 24 V DC**

Ambient temperature during operation

-25 ... +70 °C

Protection type

IP 67

Connection

Cable, 2.0 m (flying leads)

**More information / accessories**

<https://www.di-soric.com/205105>