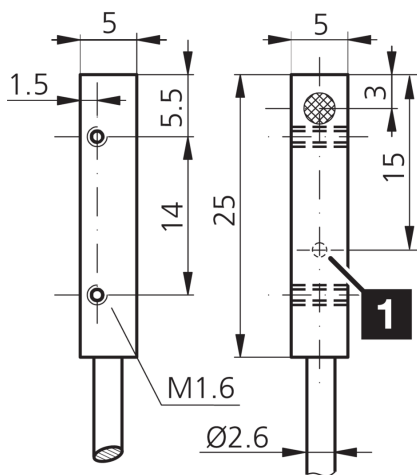
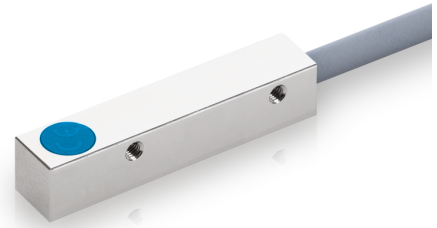




205296
DCCQ 05 M 1.5 NOLK
Inductive proximity sensor

- Highly flexible cable
- Integrated amplifier
- Short-circuit protection
- Starting pulse suppression
- LED



1) LED

BK: black

BN: brown

BU: blue

Function



Technical data (typ.)

+20°C, 24 V DC

Service voltage	10 ... 30 V DC
Internal power consumption	< 10 mA
Insulation voltage endurance	According to IEC 60947-5-2 (7.2.3.1)
Installation type	Flush
Housing dimensions	5 x 5 mm
Housing length	25 mm
Housing height	5 mm
Housing width	5 mm
Housing material	Nickel brass (chromium-plated)
Material of cable	Polyurethane
Protection class	III, operation on protective low voltage
Operating principle	inductive
Evaluation	digital
Design	Cuboid design
Characteristics	increased operating distance
Product series	INM-300 Miniature Extended
Switching output	npn, 200 mA, NC
Voltage drop (max.)	2 V (200 mA)
Switching distance (SN)	1.5 mm
Standardized measuring plate	5 x 5 x 1 mm

**205296****DCCQ 05 M 1.5 NOLK****Inductive proximity sensor****Technical data (typ.)****+20°C, 24 V DC**

Switching hysteresis (max.)

< 10 %

Switching frequency

3000 Hz

Ambient temperature during operation

-25 ... +70 °C

Protection type

IP 67

Connection

Cable, 2.0 m (flying leads)

More information / accessories<https://www.di-soric.com/205296>