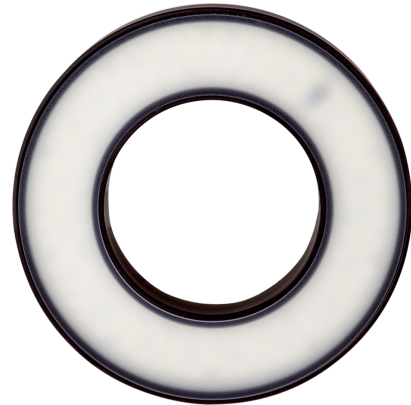




207146
BE-R70-F1-K-DIF
Ringlight

- High excess current factor
- Pulsed mode for inspection of fast moving objects
- Extremely powerful light for high depth of field
- Long life thanks to intelligent thermal management
- Homogeneous luminous field
- High protection type IP 67
- Robust metal housing



1) 6 mm deep 2) Connection cable

Betrieb ausschließlich mit Flash-Controller an einem *Supply Class 2* - Netzteil!
Use only with flash equipment driven by a power supply *Class 2*!
A utiliser exclusivement avec un contrôleur d'impulsion connecté a une alimentation *Class 2*!

Function										

Technical data (typ.)	+20°C, 24 V DC
Power consumption (in pulse / max.)	96.0 W
Energization factor (in pulse / max.)	8
Energization (in pulse / max.)	6000 mA
Service voltage	No constant voltage!
Inverse polarity protection	Yes
Insulation voltage endurance	500 V
Diameter	Ø 70 / Ø 130 mm (Diameter)
Height	20 mm
Housing material	Aluminum (Black, Anodized)
Material	<ul style="list-style-type: none"> ■ Polyurethane (Cable) ■ PMMA, diffuse (Protection optics)
Risk group (DIN EN 62471)	Free group
Approvals	UL
Design	Ringlight
Light source	LED
Color	Red (diffuse)
Wavelength	633 nm
Deflection angle FWHM	30°



207146
BE-R70-F1-K-DIF
Ringlight

Technical data (typ.)		+20°C, 24 V DC	
Light intensity		<ul style="list-style-type: none">■ 3.00 kLx (200.0 mm / 100 %)■ 10.5 kLx (200.0 mm / 400 %)■ 22.0 kLx (200.0 mm / 800 %)■ 620 Lux (500.0 mm / 100 %)■ 2.40 kLx (500.0 mm / 400 %)■ 4.70 kLx (500.0 mm / 800 %)	
Control		Flashable by means of flash controller	
Shock/vibration load		30 g, 11 ms / 10 ... 55 Hz, 1.0 mm	
Ambient temperature during operation		0 ... +40 °C	
Protection type		IP 67	
Connection		Cable, 2.5 m (flying leads, Use only with flash controller!)	
More information / accessories		https://www.di-soric.com/207146	