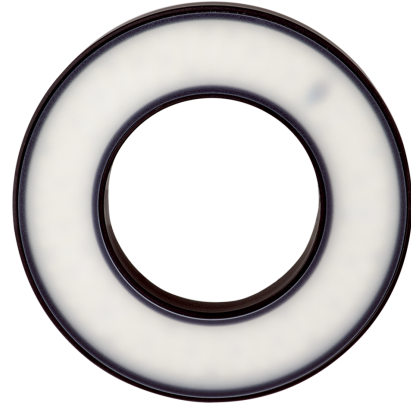
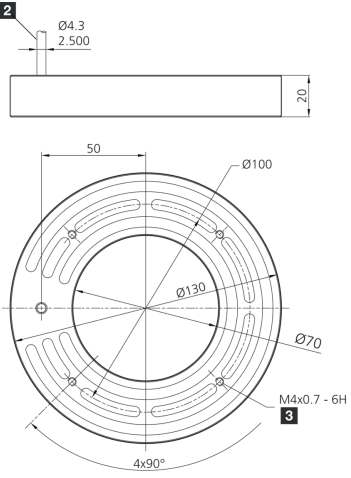




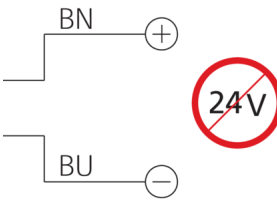
207149
BE-R70-F5-K-DIF
Ringlight

- High excess current factor
- Pulsed mode for inspection of fast moving objects
- Extremely powerful light for high depth of field
- Long life thanks to intelligent thermal management
- Homogeneous luminous field
- High protection type IP 67
- Robust metal housing





1) 6 mm deep 2) Connection cable



Betrieb ausschließlich mit Flash-Controller an einem *Supply Class 2* - Netzteil!
Use only with flash equipment driven by a power supply *Class 2*!
A utiliser exclusivement avec un contrôleur d'impulsion connecté a une alimentation *Class 2*!

Function										
										   

Technical data (typ.)	+20°C, 24 V DC
Power consumption (in pulse / max.)	140 W
Energization factor (in pulse / max.)	10
Energization (in pulse / max.)	6000 mA
Service voltage	No constant voltage!
Inverse polarity protection	Yes
Insulation voltage endurance	500 V
Diameter	Ø 70 / Ø 130 mm (Diameter)
Height	20 mm
Housing material	Aluminum (Black, Anodized)
Material	<ul style="list-style-type: none"> ■ Polyurethane (Cable) ■ PMMA, diffuse (Protection optics)
Risk group (DIN EN 62471)	Free group
Approvals	UL
Design	Ringlight
Light source	LED
Color	White (diffuse)
Wavelength	6500 K
Deflection angle FWHM	120°



207149
BE-R70-F5-K-DIF
Ringlight

Technical data (typ.)	+20°C, 24 V DC
Light intensity	<ul style="list-style-type: none"> ■ 3.70 kLx (200.0 mm / 100 %) ■ 11.5 kLx (200.0 mm / 500 %) ■ 21.0 kLx (200.0 mm / 1000 %) ■ 710 Lux (500.0 mm / 100 %) ■ 2.40 kLx (500.0 mm / 500 %) ■ 4.00 kLx (500.0 mm / 1000 %)
Control	Flashable by means of flash controller
Shock/vibration load	30 g, 11 ms / 10 ... 55 Hz, 1.0 mm
Ambient temperature during operation	0 ... +40 °C
Protection type	IP 67
Connection	Cable, 2.5 m (flying leads, Use only with flash controller!)
More information / accessories	https://www.di-soric.com/207149