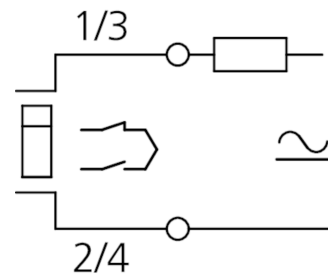
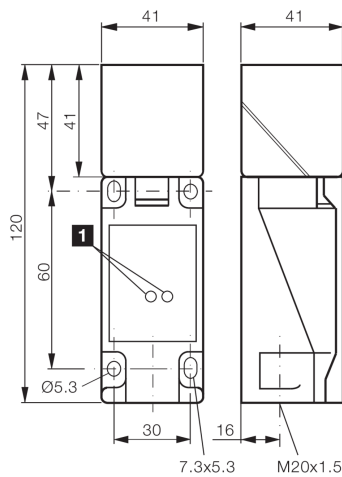




207574
UCCR 40 K 20 SO-KL
Inductive proximity sensor

- Service voltage 20 ... 250 V AC/DC
- Switching function NO/NC switchable
- Plastic housing
- LED



1) LED

Function



Technical data (typ.)

Service voltage	20 ... 250 V AC/DC
Insulation voltage endurance	500 V
Installation type	Flush
Housing dimensions	41 x 41 x 120 mm
Housing length	120 mm
Housing height	41 mm
Housing width	41 mm
Housing material	Plastic (PA)
Operating principle	inductive
Evaluation	digital
Design	Cuboid design
Product series	INU Universal voltage
Switching output	400 mA, AC/DC
Switching distance (SN)	20 mm
Standardized measuring plate	60 x 60 x 1 mm
Switching hysteresis (max.)	15 %
Switching frequency	15 Hz
Ambient temperature during operation	-25 ... +70 °C
Protection type	IP 54
Connection	Clamps, A-coded



207574

UCCR 40 K 20 SO-KL

Inductive proximity sensor

[More information / accessories](#)

<https://www.di-soric.com/207574>