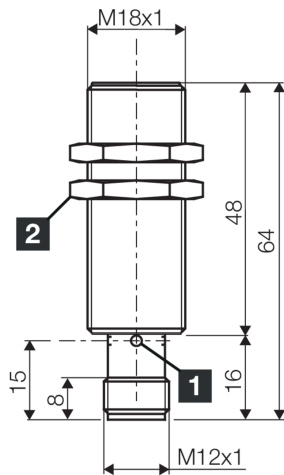




209365
DCB 18 MB 08 PS-B3
Inductive proximity sensor

- Metal connector
- Integrated amplifier
- Short-circuit protection
- Starting pulse suppression
- 4 LEDs for switching status display



1) LED 4 x 90° (yellow)

2) Width over flats 24 mm

BK: black

BN: brown

BU: blue

Function



Technical data (typ.)

+20°C, 24 V DC

Service voltage	10 ... 30 V DC
Internal power consumption	< 20 mA
Insulation voltage endurance	500 V
Installation type	Flush
Thread	M18 x 1
Housing length	64 mm
Housing material	Brass (nickel-plated)
Material	PBT (Sensor probe)
Protection class	III, operation on protective low voltage
Operating principle	inductive
Evaluation	digital
Design	Thread
Characteristics	increased operating distance
Product series	INE Extended
Switching output	pnp, 400 mA, NO
Voltage drop (max.)	1 V (400 mA)
Switching distance (SN)	8 mm
Standardized measuring plate	24 x 24 x 1 mm
Switching hysteresis (max.)	1 ... 20 %
LED Anzeige	Yes

**209365****DCB 18 MB 08 PS-B3****Inductive proximity sensor****Technical data (typ.)****+20°C, 24 V DC**

Switching frequency

300 Hz

Ambient temperature during operation

-25 ... +70 °C

Protection type

IP 67

Connection

Connector, M12, 3-pin, A-coded

Connection cable

VK ...

More information / accessories<https://www.di-soric.com/209365>