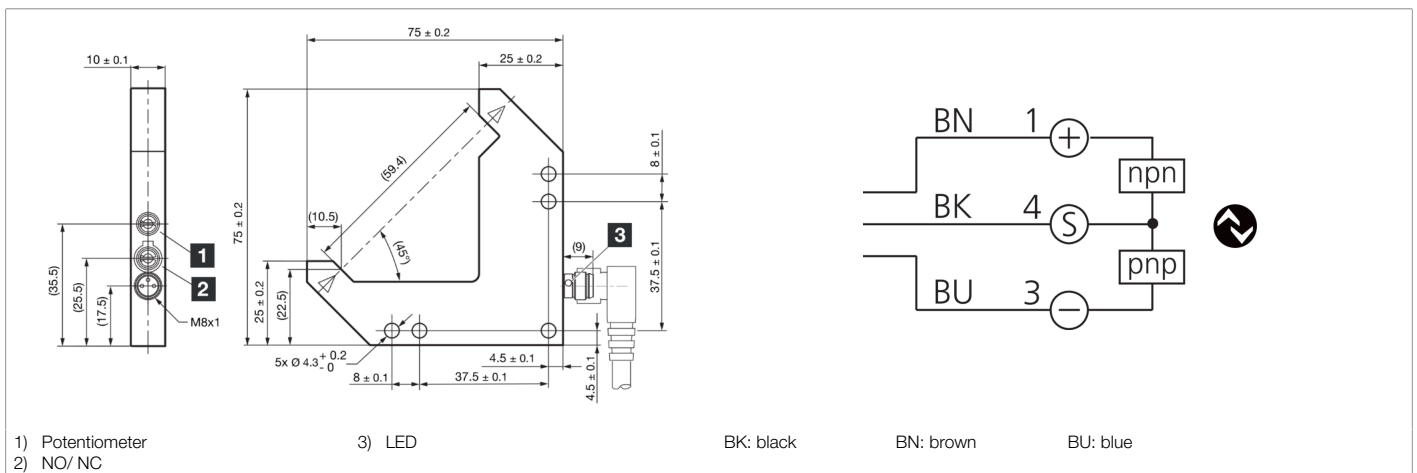
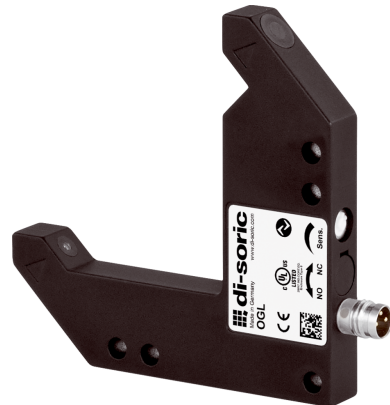




**210633**  
**OGL 050 G3-T3**  
**Angled light barrier**

- 4 operating modes as an IO-Link parameter
- Switch-on/off delay as an IO-Link parameter
- Diagnostics with IO-Link
- Metal casing
- Sensitivity is adjustable
- High switching frequency
- Light/dark switching
- Bright ring LED
- High protection type



| Function |  |  |  |  |  |  |  |  |  |  |  |
|----------|--|--|--|--|--|--|--|--|--|--|--|
|          |  |  |  |  |  |  |  |  |  |  |  |

| Technical data (typ.)        | +20°C, 24 V DC                                      |
|------------------------------|---|
| Service voltage              | 10 ... 30 V DC (Supply Class 2)                     |
| No-load current (max.)       | 30 mA   |
| Insulation voltage endurance | 500 V   |
| Leg length internal          | 50/50 mm  |
| Housing dimensions           | 75 x 75 x 10 mm                                     |
| Housing length               | 75 mm   |
| Housing height               | 75 mm   |
| Housing width                | 10 mm   |
| Housing material             | Die-cast zinc (powder-coated)                       |
| Material                     | Mineral glass (Optics)                              |
| Protection class             | III, operation on protective low voltage            |
| Approvals                    | UL  |
| Operating principle          | Optical   |
| Evaluation                   | digital   |
| Design                       | Angle   |
| Switching output             | Push-pull, 100 mA, NO/NC, switchable                |
| Voltage drop (max.)          | 1 V   |
| Interface                    | IO-Link (V1.1, COM2 38.4 kBd, Smart Sensor Profile) |
| Light source                 | LED   |
| Color                        | Infrared  |
| Wavelength                   | 880 nm  |
| Modulation                   | Clocked   |



**210633**  
**OGL 050 G3-T3**  
**Angled light barrier**

| Technical data (typ.)                 | +20°C, 24 V DC  |
|---------------------------------------|---|
| Ambient light immunity                | 25 kLx  |
| Range                                 | 60 mm (optical axis)  |
| Resolution (factory setting)          | 0.3 mm (STANDARD)   |
| Reproducibility (factory setting)     | 0.02 mm (STANDARD)  |
| Resolution (STANDARD)                 | 0.3 mm  |
| Reproducibility (STANDARD)            | 0.02 mm   |
| Resolution (HIGH RESOLUTION)          | 0.2 mm  |
| Reproducibility (HIGH RESOLUTION)     | 0.02 mm   |
| Resolution (POWER)                    | 1 mm  |
| Reproducibility (POWER)               | 0.02 mm   |
| Resolution (SPEED)                    | 0.3 mm  |
| Reproducibility (SPEED)               | 0.02 mm   |
| Sensitivity adjustment                | Potentiometer   |
| Switching frequency (factory setting) | 5000 Hz (STANDARD)  |
| Switching frequency (STANDARD)        | 5000 Hz   |
| Switching frequency (HIGH RESOLUTION) | 1500 Hz   |
| Switching frequency (POWER)           | 250 Hz  |
| Switching frequency (SPEED)           | 8000 Hz   |
| Shock/vibration load                  | 30 g, 10 ... 55 Hz / 0.5 mm   |
| Ambient temperature during operation  | -25 ... +60 °C  |
| Protection type                       | IP 67   |
| Connection                            | Connector, M8, 3-pin  |
| Connection cable                      | TK ...  |
| More information / accessories        | <a href="https://www.di-soric.com/210633">https://www.di-soric.com/210633</a> |