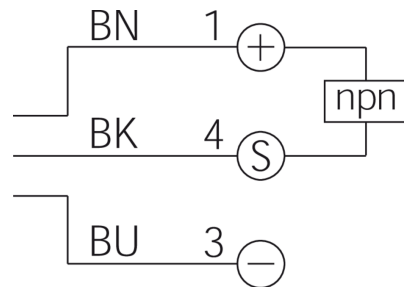
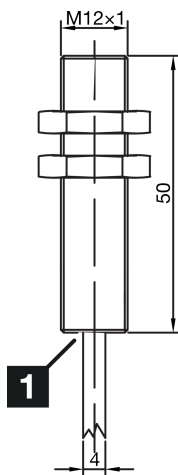
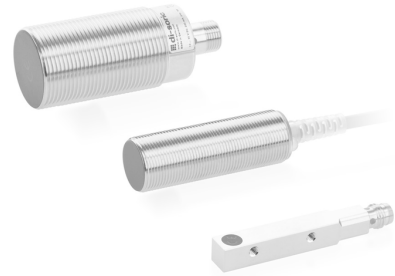




**213134**  
**INS-M12-B02NS-2C**  
**Inductive proximity sensor**

- Single switching distance
- Highly flexible cable
- Short-circuit protection
- LED switching status display
- High protection type



1) LED

BK: black

BN: brown

BU: blue

**Function**



**Technical data (typ.)**

**+20°C, 24 V DC**

Service voltage	10 ... 30 V DC
Internal power consumption	10 mA
Insulation voltage endurance	< 500 V DC
Installation type	Flush
Thread	M12 x 1
Housing length	50 mm
Housing material	Brass (nickel-plated)
Material of cable	PVC
Protection class	III, operation on protective low voltage
Operating principle	inductive
Evaluation	digital
Design	Thread
Characteristics	Single switching distance
Product series	INS-100 Standard
Switching output	npn, 200 mA, NO
Voltage drop (max.)	1.5 V DC
Switching distance (SN)	2 mm
Standardized measuring plate	12 x 12 x 1 mm
Switching hysteresis (max.)	< 10 %
LED Anzeige	Yes



213134

INS-M12-B02NS-2C

Inductive proximity sensor

**Technical data (typ.)**

**+20°C, 24 V DC**

Switching frequency

2000 Hz

Ambient temperature during operation

-25 ... +70 °C

Protection type

IP 67

Connection

Cable, 2.0 m, A-coded

**More information / accessories**

<https://www.di-soric.com/213134>