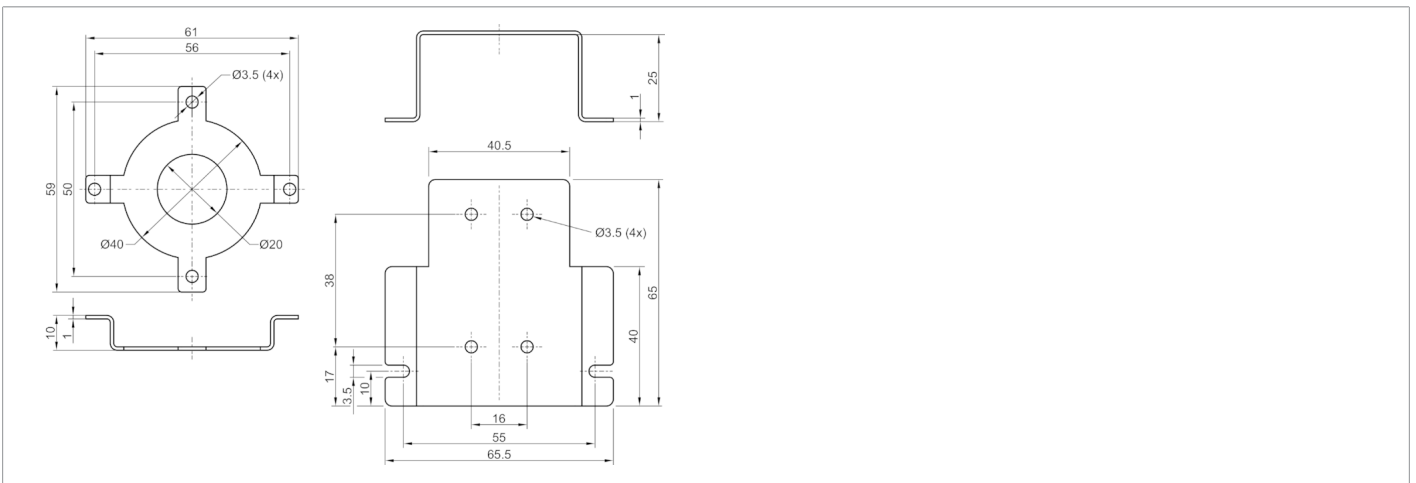
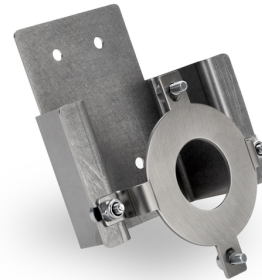




213691
HS-BE-DOME-MP-VS-M3
Holding system-BE-DOME-CS60

- Easy installation of DOME series lights on the CS-60
- Mounting element made of stainless steel



Technical data (typ.)

Housing dimensions	65 x 65.5 x 35 mm
Housing material	Stainless steel
Component	Retaining plate
To be used for	CS 60 Vision Sensors, BE-DOME 100/70 ..., BE-DOME 170/110 ...
Scope of delivery	2 bent sheet metal parts, Fixing material

More information / accessories

<https://www.di-soric.com/213691>