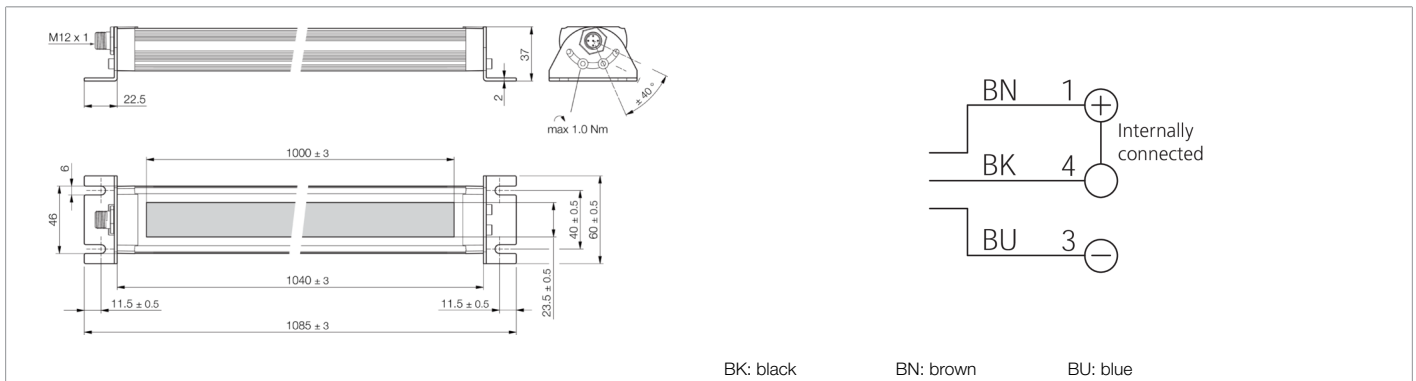
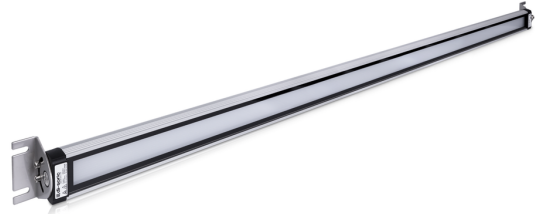




213807
MB-R-1040-B5
Machine lighting, semicircle

- Extended temperature range -20 .. +50 °C
- 3 mm safety glass with opal-white glare reduction
- M12 plug connector for easy wiring
- Industrial quality due to IP 67
- Homogeneous light distribution
- Pleasant, neutral white light



Function													

Technical data (typ.)	+20°C, 24 V DC
Service voltage	24 V DC (± 10%)
Internal power consumption	1180 mA (24 V DC)
Power	28.3 W (24 V)
Inverse polarity protection	Yes
Illuminated area	1000 x 23.5 mm
Housing material	Aluminum (natural, Anodized)
Material	Tempered safety glass, diffuse (Diffusor)
Weight	1450 g
Protection class	III, operation on protective low voltage
Risk group (DIN EN 62471)	Free group
Approvals	UL
Model	Machine lighting, semicircle
Service life	> 50.000 h (L70/B10)
Product series	MB-R
Energy efficiency class (VO 2019/2015)	G (A - G)
Color	White (5 000 K)
Deflection angle FWHM	106° (typ.)
Luminous flux	1690 lm
Light yield	61 lm/W
Color rendering index Ra	> 80
Light intensity	<ul style="list-style-type: none"> ■ 3800 Lux (250.0 mm) ■ 1580 Lux (500.0 mm) ■ 520 Lux (1000.0 mm) ■ 275 Lux (1500.0 mm) ■ 160 Lux (2000.0 mm)



213807

MB-R-1040-B5

Machine lighting, semicircle

Technical data (typ.)	+20°C, 24 V DC
Shock/vibration load	30 g, 11 ms / 10 ... 55 Hz, 1.0 mm
Ambient temperature during operation	-20 ... +50 °C
Protection type	IP 67
Connection	Connector, M12, 5-pin (A-coded)
More information / accessories	https://www.di-soric.com/213807