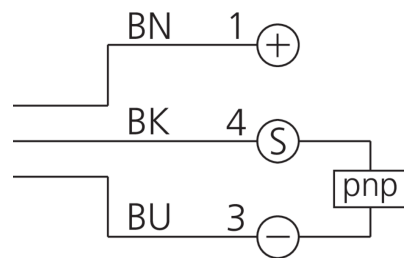
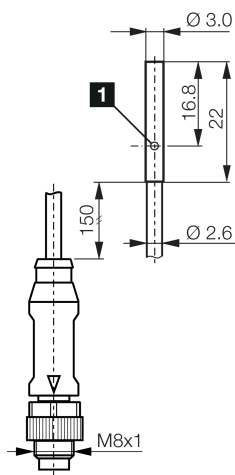
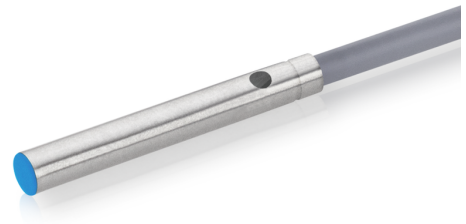




200356
DCC 3.0 V 1.0 POK-K-TSL
Inductive proximity sensor

- Highly flexible cable
- Metal connector
- Integrated amplifier
- Short-circuit protection
- Starting pulse suppression
- LED



1) LED

BK: black

BN: brown

BU: blue

Function



Technical data (typ.)

+20°C, 24 V DC

Service voltage	10 ... 30 V DC
Internal power consumption	< 10 mA
Insulation voltage endurance	According to IEC 60947-5-2 (7.2.3.1)
Installation type	Flush
Diameter	Ø 3.0 mm (Diameter)
Housing length	22 mm
Housing material	Stainless steel (V2A)
Material of cable	Polyurethane
Protection class	III, operation on protective low voltage
Operating principle	inductive
Evaluation	digital
Design	Cylinder
Characteristics	increased operating distance
Product series	INM-300 Miniature Extended
Switching output	pnp, 100 mA, NC
Voltage drop (max.)	2 V (100 mA)
Switching distance (SN)	1 mm
Standardized measuring plate	3 x 3 x 1 mm
Switching hysteresis (max.)	< 10 %
Switching frequency	3000 Hz

**200356****DCC 3.0 V 1.0 POK-K-TSL****Inductive proximity sensor****Technical data (typ.)****+20°C, 24 V DC**

Ambient temperature during operation

-25 ... +70 °C

Protection type

IP 67

Connection

Pigtail, 0.15 m, M8, 3-pin, A-coded

Connection cable

TK ...

More information / accessories<https://www.di-soric.com/200356>