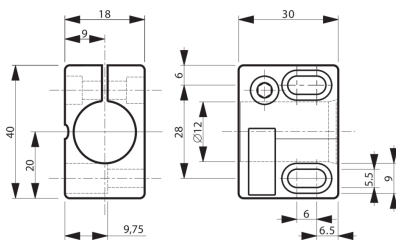




201621
SH 12
Sensor holder

- For cylindrical sensors of \varnothing 12 mm or thread M12
- Quick commissioning
- Reduced assembly / downtime due to one-piece construction
- Sensor replacement without changing the clamp position
- Slots permit clamp adjustment



Technical data (typ.)

+20°C

Hole spacing	28 mm
Mounting	Hole
Housing dimensions	18 x 30 x 40 mm
Clamping diameter	G: 12 mm
Housing material	Plastic (PA, 6 GK)
Component	Sensor holder
Characteristics	without limit stop
To be used for	Sensors \varnothing 12 mm/ Thread M12
Scope of delivery	Sensor holder

More information / accessories

<https://www.di-soric.com/201621>