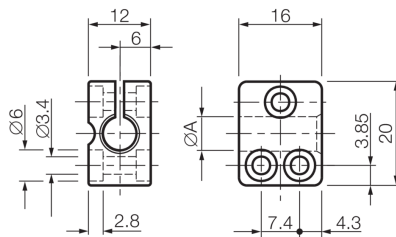




**201632**  
**SH 8 A**  
**Sensor holder**

- For cylindrical sensors of  $\varnothing$  8 mm or thread M8
- Quick commissioning
- Reduced assembly / downtime due to one-piece construction
- Sensor replacement without changing the clamp position
- Limit stop for sensor replacement without readjustment



**Technical data (typ.)**

**+20°C**

Mounting	Hole
Clamping diameter	A: 8.0 mm
Housing material	Plastic (PA, 6 GK)
Component	Sensor holder
Characteristics	with limit stop
To be used for	Sensors $\varnothing$ 8 mm/ Thread M8
Scope of delivery	Sensor holder

**More information / accessories**

<https://www.di-soric.com/201632>