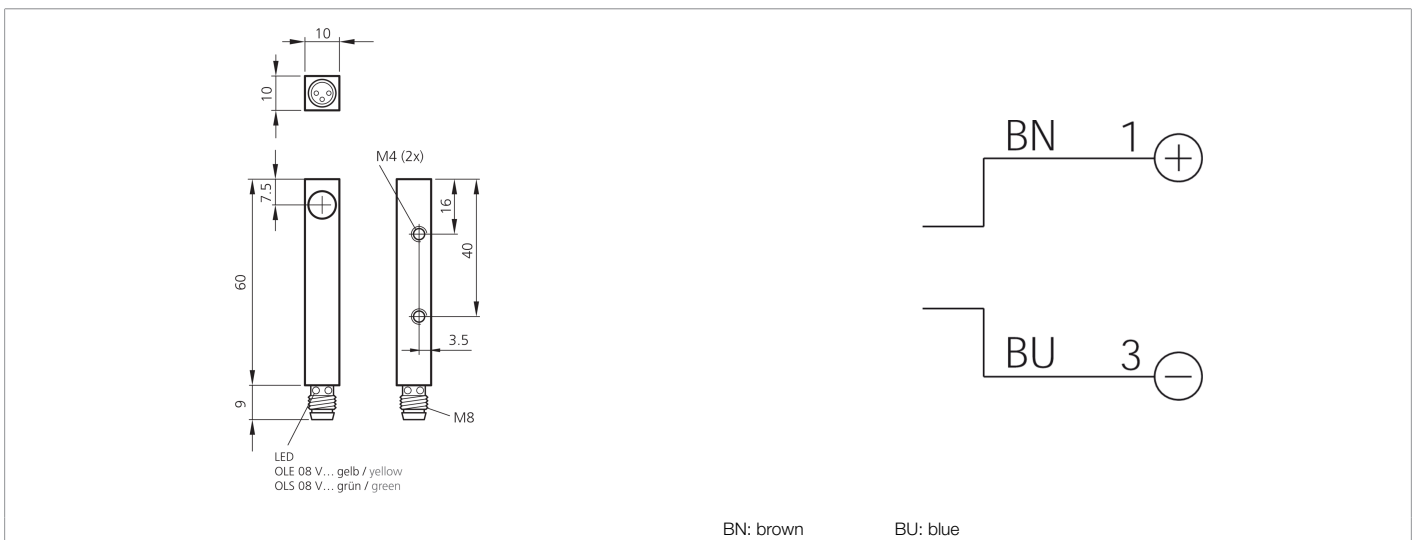
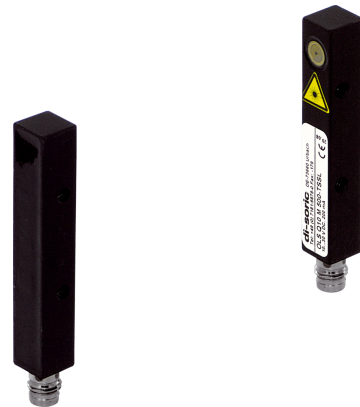




202843
OLS Q10 M 2000-TSSL
Laser through-beam sensor, transmitter

- Collimated red-light laser
- Visible laser spot
- Compact design
- Robust metal housing



Function



Technical data (typ.)

+20°C, 24 V DC

Service voltage	10 ... 35 V DC
No-load current (max.)	30 mA
Insulation voltage endurance	500 V
Housing dimensions	10 x 10 x 60 mm
Housing length	10 mm
Housing height	10 mm
Housing width	60 mm
Housing material	Die-cast zinc (Black, painted)
Material	Glass (Window)
Protection class	III, operation on protective low voltage
Operating principle	Through-beam sensor
Evaluation	digital
Design	Cuboid design
Consisting of	Transmitter
Voltage drop (max.)	2.5 V
Light source	Laser
Laser class	CLASS 1 LASER PRODUCT, 1 (IEC 60825-1:2014 / EN 60825-1:2014)
Color	Red
Wavelength	650 nm (Pp < 1.6 mW t = 6 µs)
Modulation	Clocked



202843

OLS Q10 M 2000-TSSL

Laser through-beam sensor, transmitter

Technical data (typ.)	+20°C, 24 V DC
Laser beam divergence	2 mrad
Laser direction error	< 10 mrad
Range	500 ... 2000 mm
Sensitivity adjustment	no setting elements
Switching frequency	2000 Hz
Ambient temperature during operation	0 ... +50 °C
Protection type	IP 67
Connection	Connector, M8, 3-pin
Connection cable	TK ...
More information / accessories	https://www.di-soric.com/202843