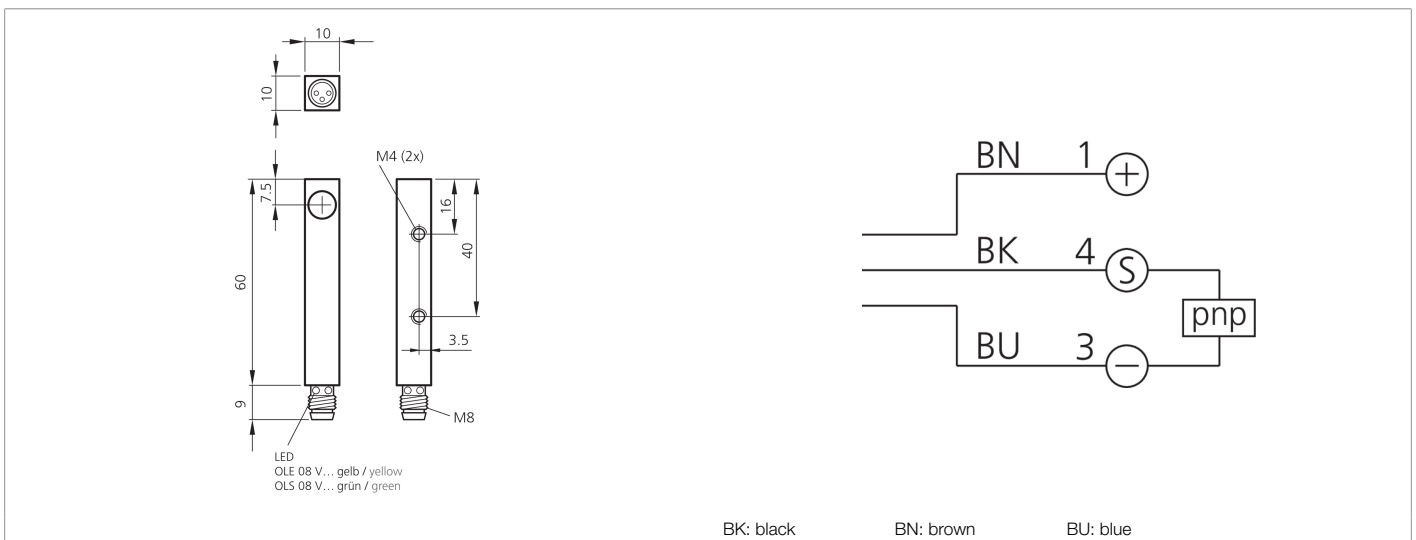
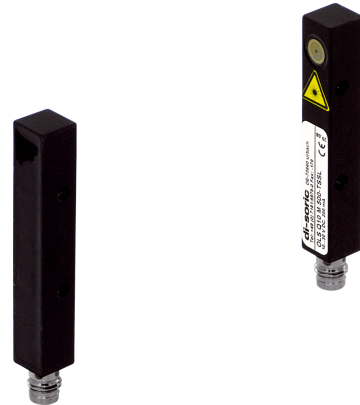




**202969**  
**OLE Q10 M 2000 P1K-TSSL**  
**Laser through-beam sensor, receiver**

- Compact design
- High resolution, switching accuracy, switching frequency
- Robust metal housing



Function											

Technical data (typ.)	+20°C, 24 V DC
Service voltage	10 ... 35 V DC
No-load current (max.)	30 mA
Insulation voltage endurance	500 V
Housing dimensions	10 x 10 x 60 mm
Housing length	10 mm
Housing height	10 mm
Housing width	60 mm
Housing material	Die-cast zinc (Black, painted)
Material	Glass (Window)
Protection class	III, operation on protective low voltage
Operating principle	Through-beam sensor
Evaluation	digital
Design	Cuboid design
Consisting of	Receiver
Switching output	pnp, 200 mA, NC
Voltage drop (max.)	2.5 V
Light source	Laser
Ambient light immunity	5 kLx
Range	500 ... 2000 mm
Resolution	Ø 0.5 mm



**202969**

**OLE Q10 M 2000 P1K-TSSL**

**Laser through-beam sensor, receiver**

<b>Technical data (typ.)</b>	<b>+20°C, 24 V DC</b>
Switching hysteresis (max.)	0.1 mm
Reproducibility	< 0.1 mm
Sensitivity adjustment	no setting elements
Switching frequency	2000 Hz
Ambient temperature during operation	0 ... +50 °C
Protection type	IP 67
Connection	Connector, M8, 3-pin
Connection cable	TK ...
<b>More information / accessories</b>	<b><a href="https://www.di-soric.com/202969">https://www.di-soric.com/202969</a></b>