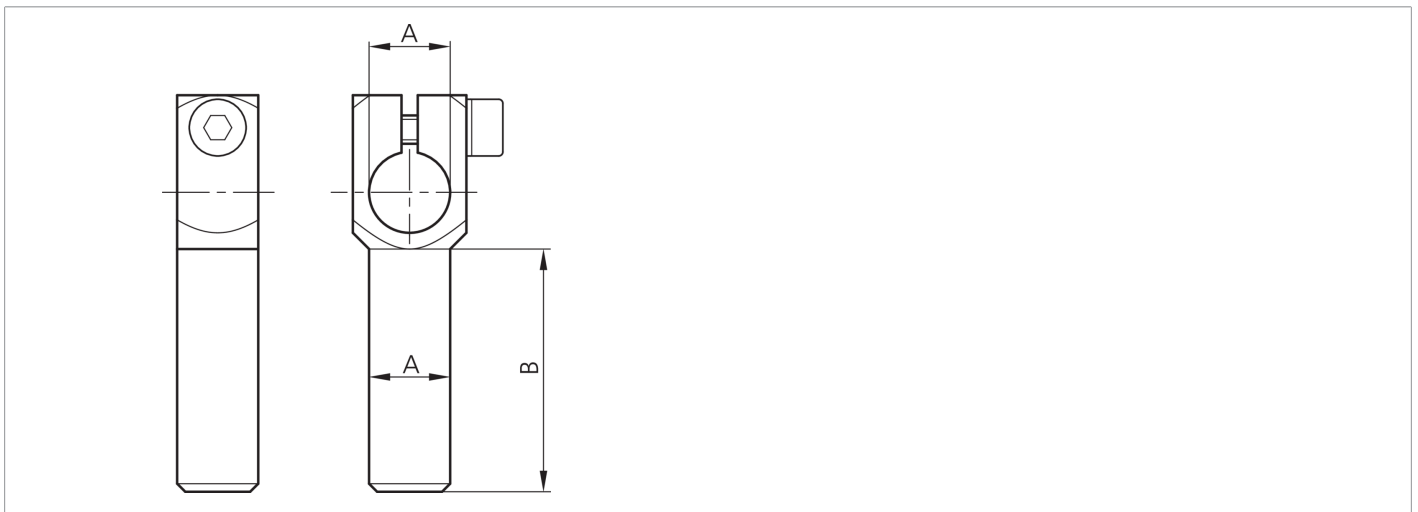
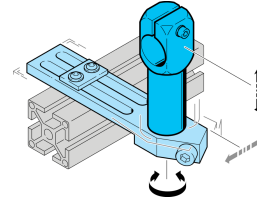




203893
SH-WKA-10-10-60
Angle arm

- Highly flexible versatile mounting system
- Universal mounting
- Stepless adjustment
- Robust design



Technical data (typ.)

		+20°C
Diameter		A: 10 mm
Dimension		B: 60 mm
Housing material		Metal
Component		Angle arm
To be used for		Clamping pin 10 mm
Product series		Z-UBT-KL-MS Assembly system

More information / accessories

<https://www.di-soric.com/203893>