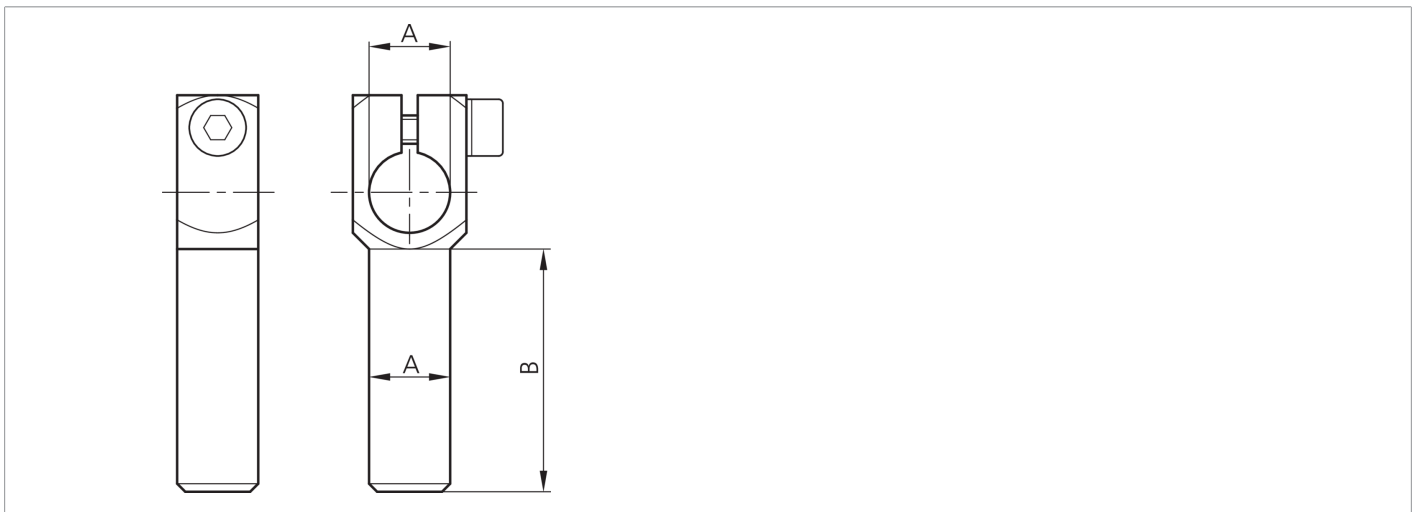
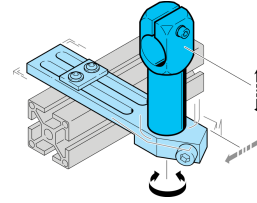




203899
SH-WKA-20-20-100
Angle arm

- Highly flexible versatile mounting system
- Universal mounting
- Stepless adjustment
- Robust design



Technical data (typ.)		+20°C
Diameter		A: 20 mm
Dimension		B: 100 mm
Housing material		Metal
Component		Angle arm
To be used for		Clamping pin 20 mm
Product series		Z-UBT-KL-MS Assembly system
More information / accessories		https://www.di-soric.com/203899