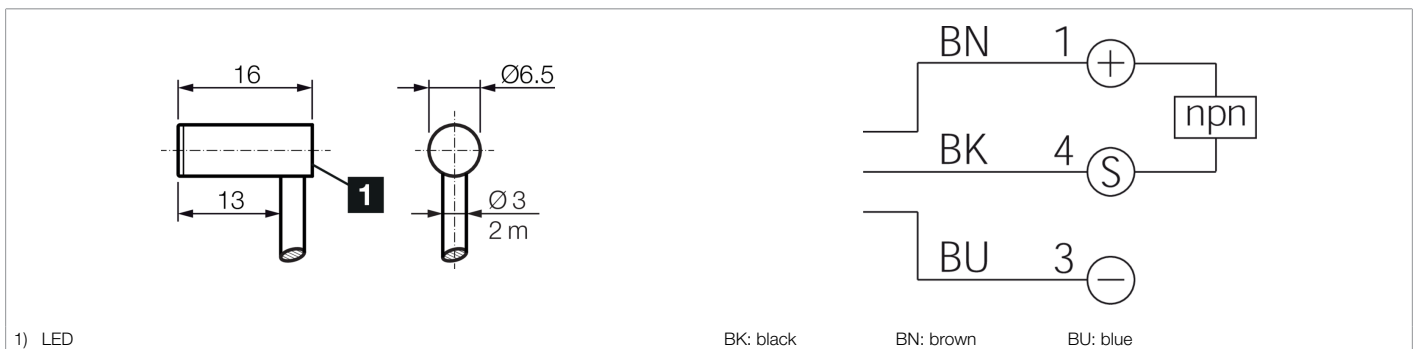
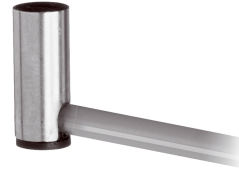




**205123**  
**DCCKR 6.5 V 1.5 NSLK**  
**Inductive proximity sensor**

- Highly flexible cable
- Integrated amplifier
- Short-circuit protection
- Starting pulse suppression
- LED



| Function |  |  |  |  |  |  |  |  |  |  |  |           |
|----------|--|--|--|--|--|--|--|--|--|--|--|-----------|
|          |  |  |  |  |  |  |  |  |  |  |  | <b>CE</b> |

| Technical data (typ.)                | +20°C, 24 V DC                           |
|--------------------------------------|--|
| Service voltage                      | 10 ... 30 V DC                           |
| Internal power consumption           | < 10 mA                                  |
| Insulation voltage endurance         | According to IEC 60947-5-2 (7.2.3.1)     |
| Installation type                    | Flush                                    |
| Diameter                             | Ø 6.5 mm (Diameter)                      |
| Housing length                       | 16 mm                                    |
| Housing material                     | Stainless steel (V2A)                    |
| Material of cable                    | PVC                                      |
| Protection class                     | III, operation on protective low voltage |
| Operating principle                  | inductive                                |
| Evaluation                           | digital                                  |
| Design                               | Cylinder                                 |
| Switching output                     | npn, 200 mA, NO                          |
| Voltage drop (max.)                  | 2 V (200 mA)                             |
| Switching distance (SN)              | 1.5 mm                                   |
| Standardized measuring plate         | 6.5 x 6.5 x 1 mm                         |
| Switching hysteresis (max.)          | < 20 %                                   |
| Switching frequency                  | 5000 Hz                                  |
| Ambient temperature during operation | -25 ... +70 °C                           |
| Protection type                      | IP 67                                    |
| Connection                           | Cable, 2.0 m (flying leads)              |

| More information / accessories | <a href="https://www.di-soric.com/205123">https://www.di-soric.com/205123</a> |
|--------------------------------|---|
|--------------------------------|---|