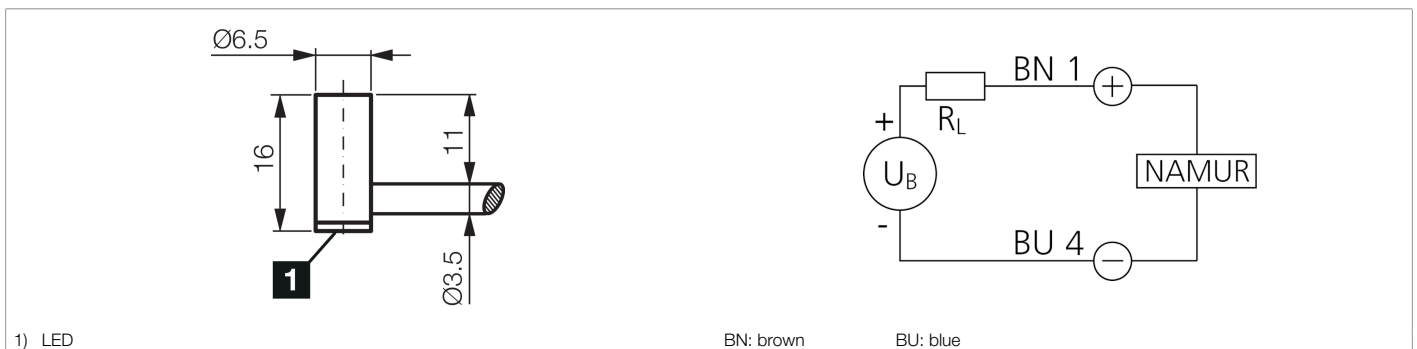
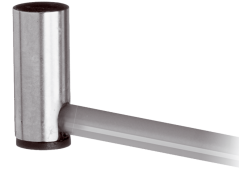




**205703**  
**DCCKR 6.5 V 1.5 NAMUR/2m PUR**  
**Inductive proximity sensor**

- Versions in accordance with NAMUR
- Service voltage 5 ... 30 V DC
- Output current max. 1 mA with energized proximity switch
- Output current min. 2.2 mA with de-energized proximity switch
- Highly flexible cable
- Starting pulse suppression
- LED



Function												

Technical data (typ.)	+20°C, 24 V DC
Service voltage	10 ... 30 V DC
Insulation voltage endurance	According to IEC 60947-5-2 (7.2.3.1)
Installation type	Flush
Diameter	Ø 6.5 mm (Diameter)
Housing length	16 mm
Housing material	Stainless steel
Material of cable	Polyurethane
Protection class	III, operation on protective low voltage
Operating principle	inductive
Evaluation	digital
Design	Cylinder
Product series	INN Namur
Switching output	Namur, < 1 mA
Switching distance (SN)	1.5 mm
Standardized measuring plate	6.5 x 6.5 x 1 mm
Switching frequency	10000 Hz
Ambient temperature during operation	-25 ... +70 °C
Protection type	IP 67
Connection	Cable, 2.0 m, 2-pin, A-coded

**More information / accessories**      <https://www.di-soric.com/205703>