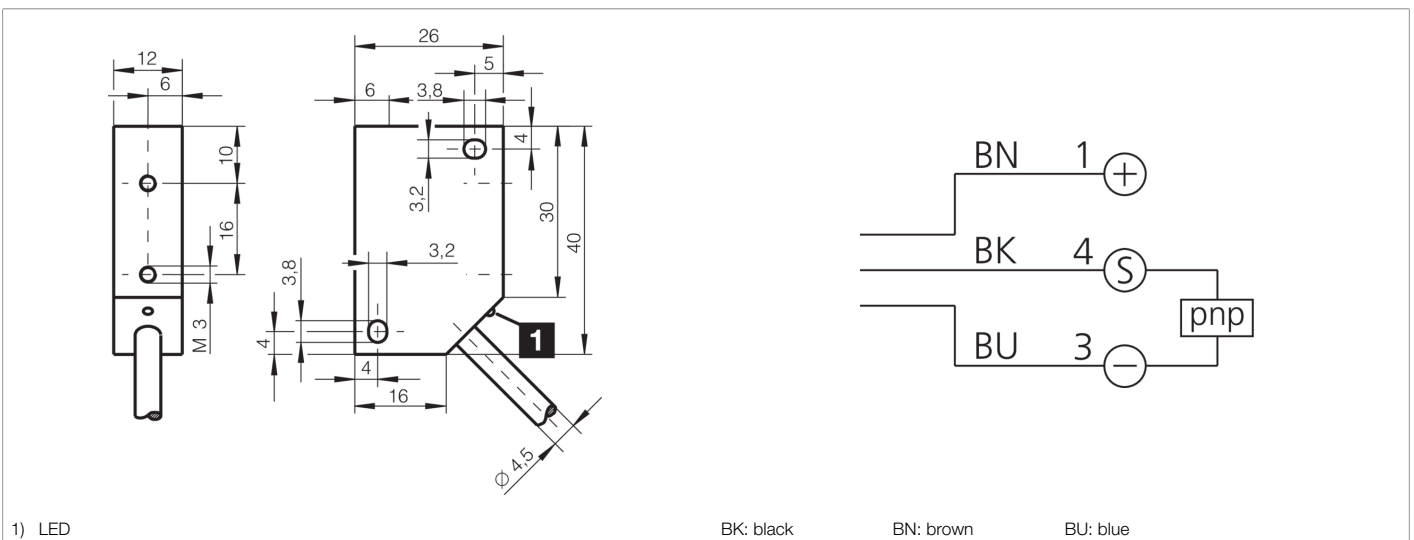
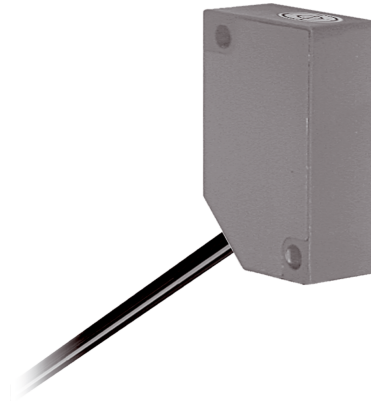




208256
DCR 40 K 04 V PSLK
Inductive proximity sensor

- Highly flexible cable
- Integrated amplifier
- Short-circuit protection
- LED



| Function | | | | | | | | | | |
|----------|--|--|--|--|--|--|--|--|--|--|
| | | | | | | | | | | |

| Technical data (typ.) | +20°C, 24 V DC |
|------------------------------|--|
| Service voltage | 10 ... 35 V DC |
| Internal power consumption | < 10 mA |
| Insulation voltage endurance | 500 V |
| Installation type | non-flush |
| Housing dimensions | 40 x 12 mm |
| Housing length | 26 mm |
| Housing height | 40 mm |
| Housing width | 12 mm |
| Housing material | Plastic |
| Material of cable | Polyurethane |
| Protection class | III, operation on protective low voltage |
| Operating principle | inductive |
| Evaluation | digital |
| Design | Cuboid design |
| Product series | INE Extended |
| Switching output | pnp, 200 mA, NO |
| Voltage drop (max.) | 2.4 V |
| Switching distance (SN) | 4 mm |
| Standardized measuring plate | 12 x 12 x 1 mm |
| Switching hysteresis (max.) | < 15 % |



208256

DCR 40 K 04 V PSLK

Inductive proximity sensor

Technical data (typ.)

+20°C, 24 V DC

LED Anzeige

Yes

Switching frequency

800 Hz ... 800 Hz

Ambient temperature during operation

-25 ... +70 °C

Protection type

IP 67

Connection

Cable, 2.0 m (flying leads)

More information / accessories

<https://www.di-soric.com/208256>