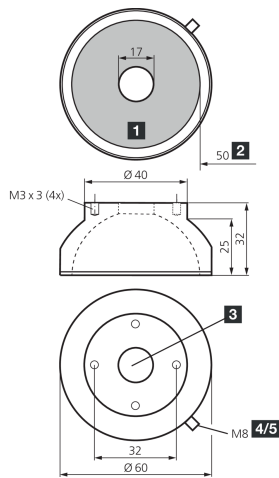
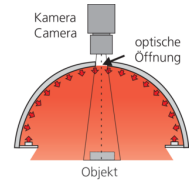
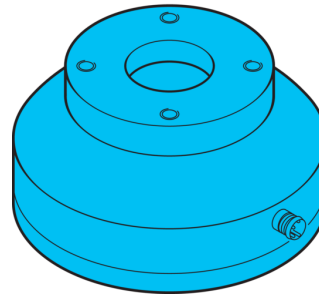




209927
BE-DOME60/50-RGB-T4
Dome light

- RGB light with separately controllable colors
- Extremely homogeneous, diffuse illumination
- Very compact design
- High light intensity
- Robust design



| PIN | Aderfarbe wire color | Funktion function |
|-----|-------------------------|----------------------|
| 4 | schwarz / black | - rot / red |
| 2 | weiß / white | - grün / green |
| 3 | blau / blue | - blau / blue |
| 1 | braun / brown | + 24V |

- 1) Sensing surface
 2) Free internal diameter
 3) Optical opening

- 4) Connector
 5) 4-pin

BK: black

BN: brown

BU: blue

WH: white

Function

| | | | | | | | | | | | | |
|--|--|--|--|--|--|--|--|--|--|----|----------|--|
| | | | | | | | | | | CE | UK CA | |
|--|--|--|--|--|--|--|--|--|--|----|----------|--|

Technical data (typ.)

+20°C, 24 V DC

| | |
|--------------------------------------|--|
| Service voltage | 24 V DC |
| Power | 1.2 W (24 V DC) |
| Power consumption | 150 mA (3 colors, $\Sigma < 3.6$ W) |
| Illuminated area | Ø 50 mm |
| Quantity | 20 (LEDs) |
| Diameter | Ø 60 mm (Diameter) |
| Housing material | Aluminum / Plastic |
| Protection class | III, operation on protective low voltage |
| Risk group (DIN EN 62471) | Free group |
| Light source | LED |
| Color | RGB |
| Wavelength | 630, 530, 470 nm |
| Deflection angle FWHM | 120° |
| Ambient temperature during operation | 0 ... +50 °C |
| Connection | Connector, M8, 4-pin |

More information / accessories

<https://www.di-soric.com/209927>