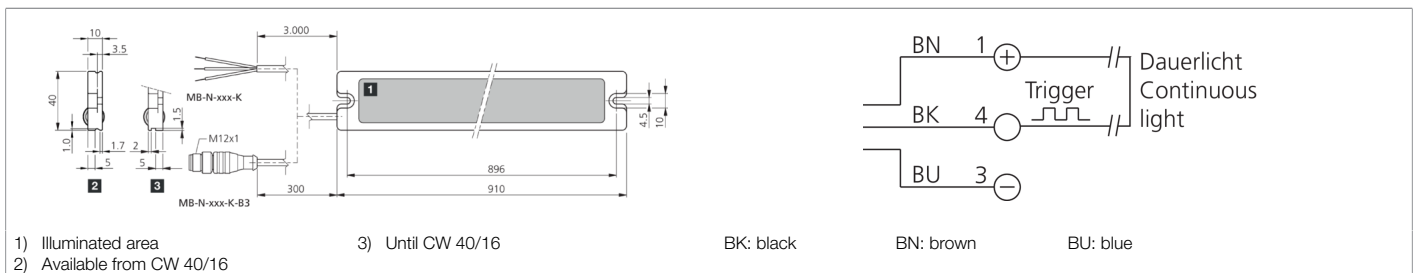
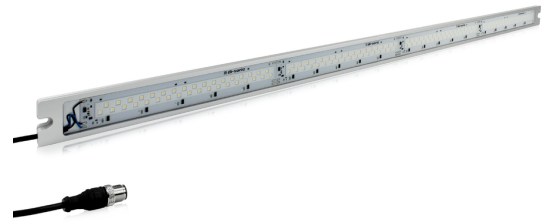


210199
MB-N-911-K-B3
Machine lighting

- High light intensity thanks to state-of-the-art Power LEDs
- Very good color reproduction guarantees safety at the workplace (color rendering index 85)
- Long life thanks to intelligent thermal management
- High-performance LEDs with very high light intensity ensure reliable and even illumination
- High protection type IP 67
- Trigger input for external control
- Dimmable via PWM signal
- Magnetic holder set available as an option
- Adjustable mounting angle optionally available
- Pluggable diffusion filter optionally available



Function										

Technical data (typ.)	
Service voltage	24 V DC (± 5%, Supply Class 2)
Internal power consumption	1800 mA (24 V DC)
Power	43.2 W (24 V)
Inverse polarity protection	Yes
Cascadable	Not cascadable
Illuminated area	870 x 30 mm
Housing material	Aluminum (natural, Anodized)
Material	PU, crystal clear (Window)
Weight	700 g
Protection class	III, operation on protective low voltage
Risk group (DIN EN 62471)	Free group
Approvals	UL
Model	Machine lighting
Product series	MB-N
Trigger input high level	> 8.0 ... 25.2 V
Trigger input low level	< 5.0 V
Light source	LED
Energy efficiency class (VO 2019/2015)	E (A - G)
Color	White (5 000 K)
Deflection angle FWHM	120°
Luminous flux	4400 lm
Color rendering index Ra	85
Light intensity	<ul style="list-style-type: none"> ■ 4.40 kLx (500.0 mm / 100 %) ■ 1.60 kLx (1000.0 mm / 100 %)
On-delay time (Trig.)	0.050 ms
Switch off delay (Trig.)	0.050 ms
Shock/vibration load	30 g, 11 ms / 10 ... 55 Hz, 1.0 mm
Ambient temperature during operation	0 ... +40 °C



210199

MB-N-911-K-B3

Machine lighting

Technical data (typ.)

Protection type	IP 67
Connection	Pigtail, 0.3 m, M12, 3-pin
Connection cable	VK ...

More information / accessories

<https://www.di-soric.com/210199>