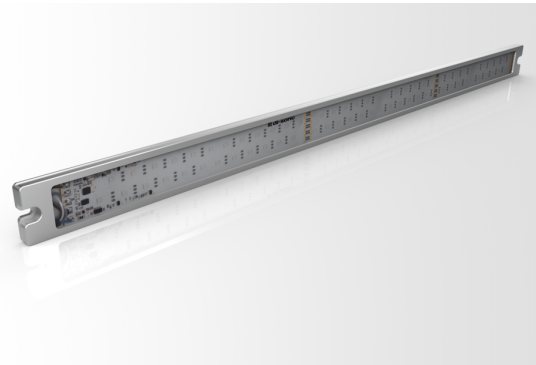




213116
SB-RGB-701-K-B5
Signal lighting

- Nine segments. external trigger / segment mode / level mode / demo mode
- Easy operation is also possible without IO-Link
- Freely configurable functions via IO-Link
- Long life thanks to intelligent thermal management
- Large light field for optimal display of the machine status
- High protection type IP 67
- Magnetic holder set available as an option
- Adjustable mounting angle optionally available
- Pluggable diffusion filter optionally available



1) Illuminated area

Operating mode: External trigger

TRIG 1	TRIG 2	TRIG 3	Pre-Set	Factory setting	
				Var. 126	Var. 251-911
0	0	0	1	<input type="checkbox"/> Off	<input type="checkbox"/> Off
1	0	0	2	<input type="checkbox"/> Red	<input type="checkbox"/> Red
0	1	0	3	<input type="checkbox"/> Green	<input type="checkbox"/> Green
1	1	0	4	<input type="checkbox"/> Yellow	<input type="checkbox"/> Yellow
0	0	1	5	<input type="checkbox"/> Blue	<input type="checkbox"/> Blue
1	0	1	6	<input type="checkbox"/> Red	<input type="checkbox"/> Red
0	1	1	7	<input type="checkbox"/> Green	<input type="checkbox"/> Green
1	1	1	8	<input type="checkbox"/> Red Cycling	<input type="checkbox"/> Yellow

All Trigger Inputs have a delay ~50 ms.
 Pre-sets can be defined via IO-Link.

BK: black BU: blue WH: white
 BN: brown GY: grey

Function										

Technical data (typ.)	+20°C, 24 V DC
Service voltage	18 ... 30 V DC (Supply Class 2)
Internal power consumption	560 mA (24 V DC)
Power	13.4 W (24 V DC)
Inverse polarity protection	Yes
Illuminated area	660 x 30 mm
Housing length	700 mm
Housing height	10 mm
Housing width	40 mm
Housing material	Aluminum (natural, Anodized)
Material	PU, crystal clear (Window)
Weight	550 g
Protection class	III, operation on protective low voltage
Risk group (DIN EN 62471)	Free group
Approvals	UL
Model	Signal lighting
Product series	SB-RGB
Number of segments (max)	9
Operation modes	External trigger / segment mode / level mode / demo mode, LED operating modes: Static / Blinking / Flashing
Light intensity can be adjusted	10 to 100 %, via IO-Link
Trigger input high level	> 8.0 V
Trigger input low level	< 5.0 V
Trigger input	8 color presets: selectable via trigger 1 + 2 +3
Interface	<ul style="list-style-type: none"> ■ IO-Link (V1.1, COM2 38,4 kBd, 5000 µs) ■ Process data



213116
SB-RGB-701-K-B5
Signal lighting

Technical data (typ.)	+20°C, 24 V DC
Light source	LED
Color	Red, green, yellow, blue, white, orange, pink, user-defined (IO-Link)
Deflection angle FWHM	120°
Shock/vibration load	30 g, 11 ms / 10 ... 55 Hz, 1.0 mm
Ambient temperature during operation	0 ... +50 °C
Protection type	IP 67
Connection	Pigtail, 0.3 m, M12, 5-pin
Connection cable	VK ... /5
More information / accessories	https://www.di-soric.com/213116