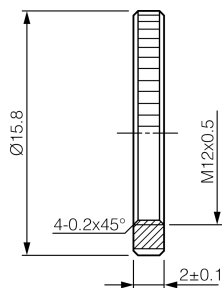




- For locking the spacer rings in place
- Robust design
- Easy to install



#### Technical data (typ.)

Housing material	Aluminum (Black, Anodized)
Lens connection	S-mount
Component	Locknut
To be used for	Vision Systems and ID Systems
Scope of delivery	1 pieces
Spacer distance (mm)	2.0 mm

#### More information / accessories

<https://www.di-soric.com/214262>